



*Japanese Bird Art, 1950 to present day*

**Part 3**  
**Screenprints**  
**by 68 artists**

## Introduction

In the early 20<sup>th</sup> century screenprinting was first used by American artists to produce art prints. To make a screenprint a template of the design was first created using a screen, typically a piece of mesh fabric (e.g., silk, polyester) or less often a piece of porous paper, which was covered with a non-porous substance except in areas of the design. The template was then placed on top of a piece of paper and ink was applied. The ink only passed through areas of the screen not covered by the non-porous substance to reproduce the design on the paper below. For multi-colored prints multiple templates were made, one for each color.

Japanese graphic artists began to use screenprinting in the mid-20<sup>th</sup> century. Since then about ninety artists have made screenprints featuring a bird subject. Sixty-eight of these artists are represented in the Reader Collection of Japanese Art. This virtual exhibition includes an example of the bird art of each of these artists. Some artists (prints 1-11) chose to depict birds objectively (i.e., accurate shape and color) while the majority (prints 12-48) provided only a semi-objective view of their bird subject. The remaining artists (prints 49-68) were even more creative and intentionally distorted the shape and color of the birds they drew.

For each of the sixty-eight prints in this exhibition the following information is provided: name of the artist, name of the bird depicted (when identifiable), print title (if any) and print size.

## Additional Reading

The Japan Foundation. 1985. Contemporary Japanese Prints 1950-1983. Published by the Japan Foundation, Japan.

1 Red-crowned crane  
(*Grus japonensis*) by  
**Takeo Honma**, entitled  
dawn, 380 x 270 mm



2 Rock dove  
(*Columba livia*) by  
**Hideaki Katō**, entitled  
messenger from the  
gods – 2, 350 x 240  
mm



3 Great tit (*Parus major*) by **Masaru Aoyagi**, 360 x 470 mm



22/07/04

Aoyagi

4 Japanese grosbeak (*Eophona personata*) by **Ikki Matsumoto**, 360 x 415 mm

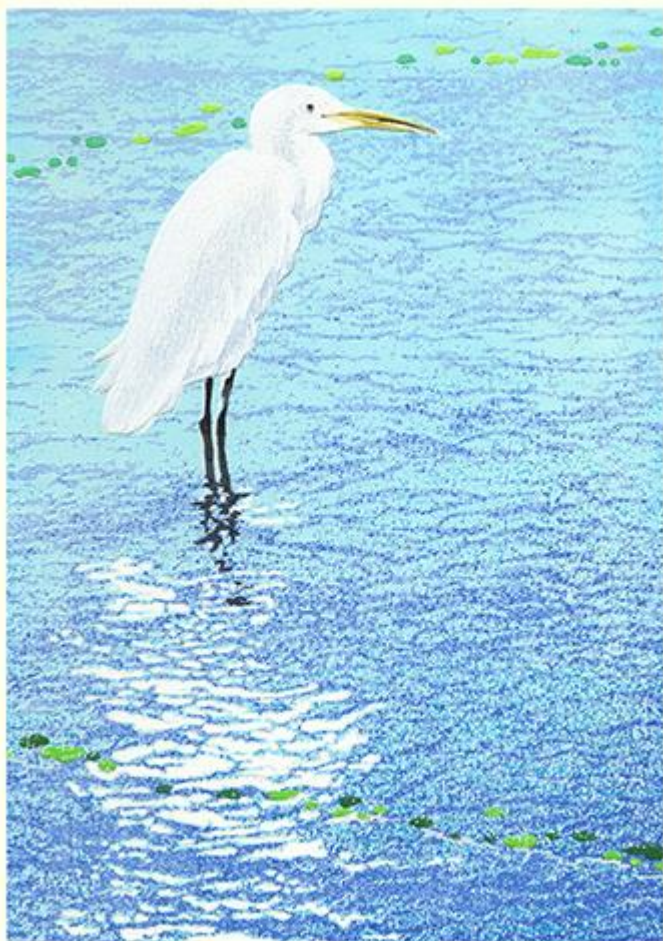


11/1/04

Ikki



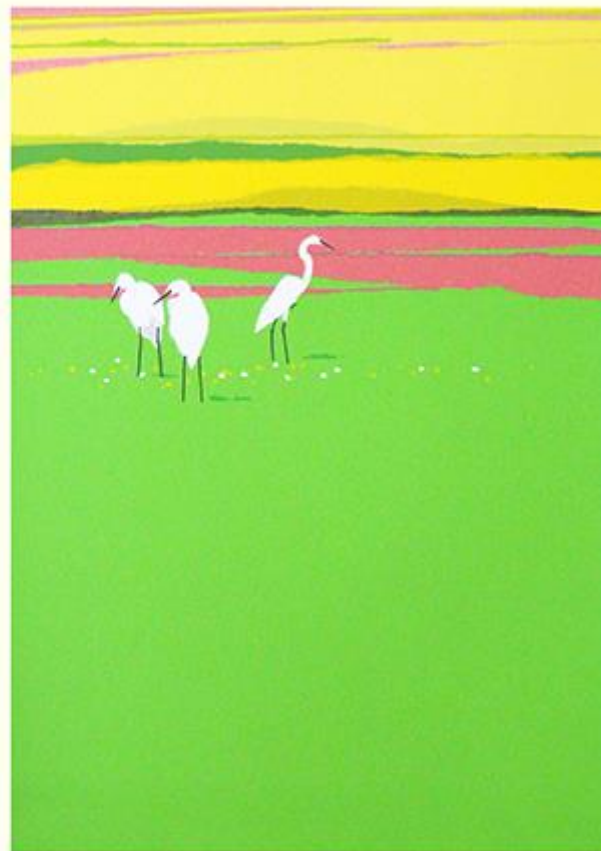
5 Little egret (*Egretta garzetta*) by **Nobuo Shinagawa**,  
220 x 270 mm



7/150



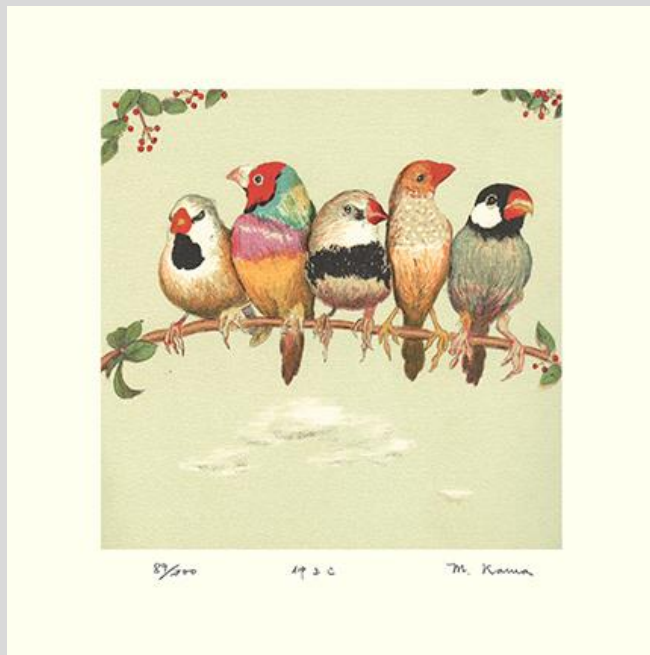
6 Little egret (*Egretta garzetta*) by **Masayasu Uchida**,  
entitled gentle breeze, 360 x 470 mm



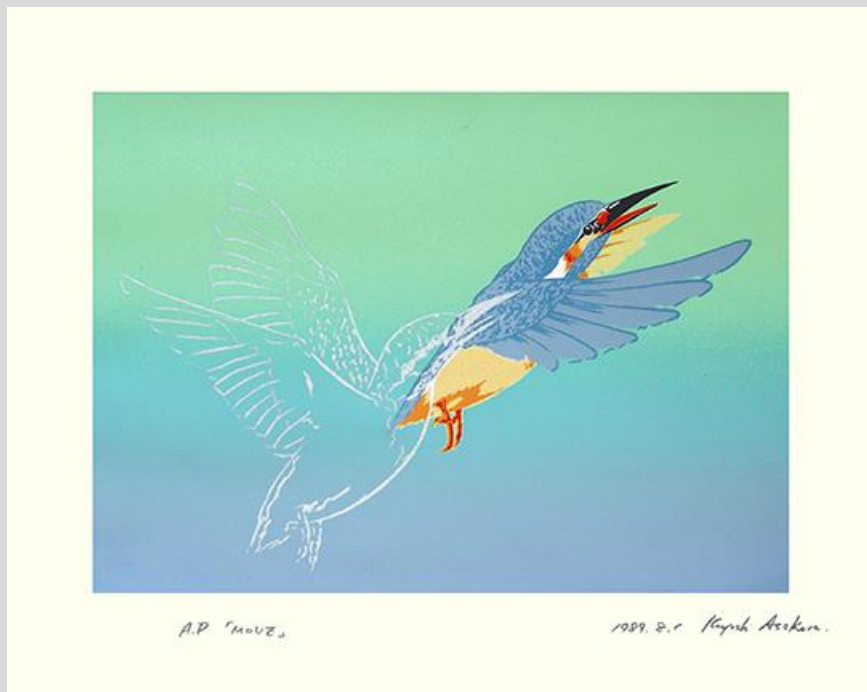
A.P.

M. Uchida

7 Long-tailed finch (*Phoephila acuticauda*), diamond firetail (*Stagonopleura guttata*), Gouldian finch (*Chloebia gouldiae*) and Java sparrow (*Padda oryzivora*) by **Masayoshi Kawa**, 240 x 260 mm



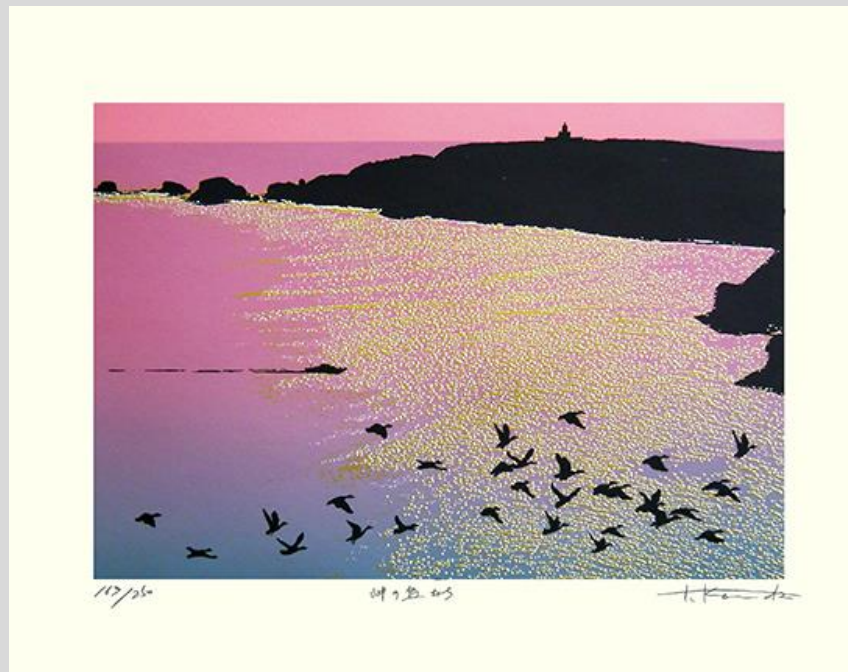
8 Common kingfisher (*Alcedo atthis*) by **Kiyoshi Asakura**, entitled move, 540 x 425 mm



9 Red-crowned crane (*Grus japonensis*) by **Sōhō Ikegami**, entitled rays of the rising sun, 530 x 385 mm



10 Duck (*Anas* sp.) by **Takehiko Konda**, entitled birds of the cape, 490 x 385 mm





11 Red-crowned crane (*Grus japonensis*) by **Yōhō Katō**, entitled flight red Fuji, 280 x 200 mm



12 Swan (*Cygnus* sp.) by **Toshisada Baba**, entitled swans, 480 x 285





13 Rock dove (*Columba livia*) by Masuiyama, 330 x 475 mm



山田 110/20

14 Rock dove (*Columba livia*) by Kō Imure, entitled song of the season five, 300 x 395 mm



5/20

季のうた 14

Kō Imure

15 Flamingo  
(*Phoenicopterus* sp.) by  
**Minoru Tabata**, entitled  
flamingo, 440 x 230 mm



16 Great egret (*Ardea alba*) by **Tadayoshi Yamamoto**, entitled  
north country phantom  
picture, 650 x 475



17 Eurasian eagle-owl (*Bubo bubo*) by Yukio Katsuda, entitled No. 124, 320 x 475 mm



18 Little egret (*Egretta garzetta*) by Hidenobu Ōshima, 210 x 275 mm



1/50 幸信



19 Red-crowned crane (*Grus japonensis*) by **Shinbō Kogure**, entitled blue sky, 260 x 205 mm



20 Gull (*Larus* sp.) by **Shigeyuki Ōhashi**, entitled migration II, 375 x 280 mm





21 Scops owl (*Otus* sp.) by **Akihiro Nakamura**,  
entitled happy owl, 160 x 200 mm



23/150

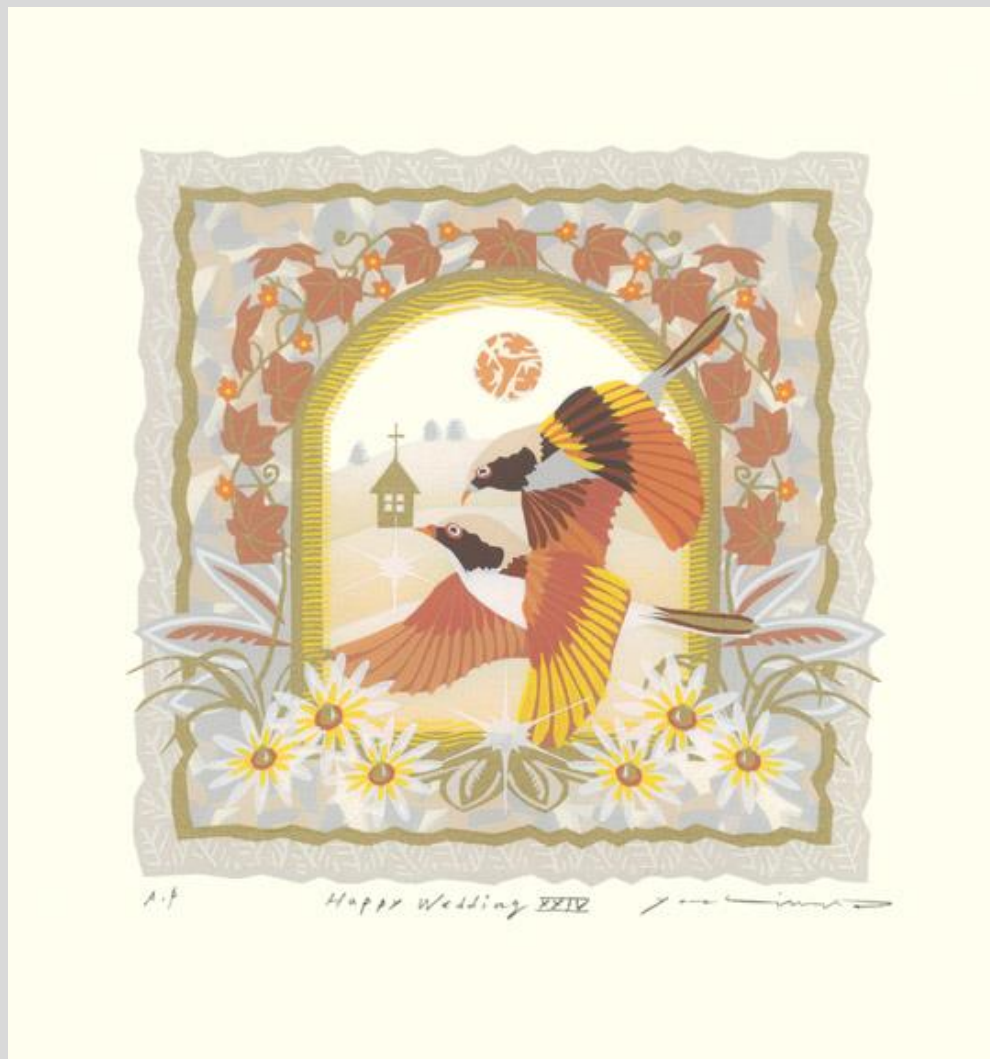
©.nakamura©

22 Domestic fowl (*Gallus gallus*) by **Tarō Gomi**, entitled  
domestic fowl, 290 x 290 mm

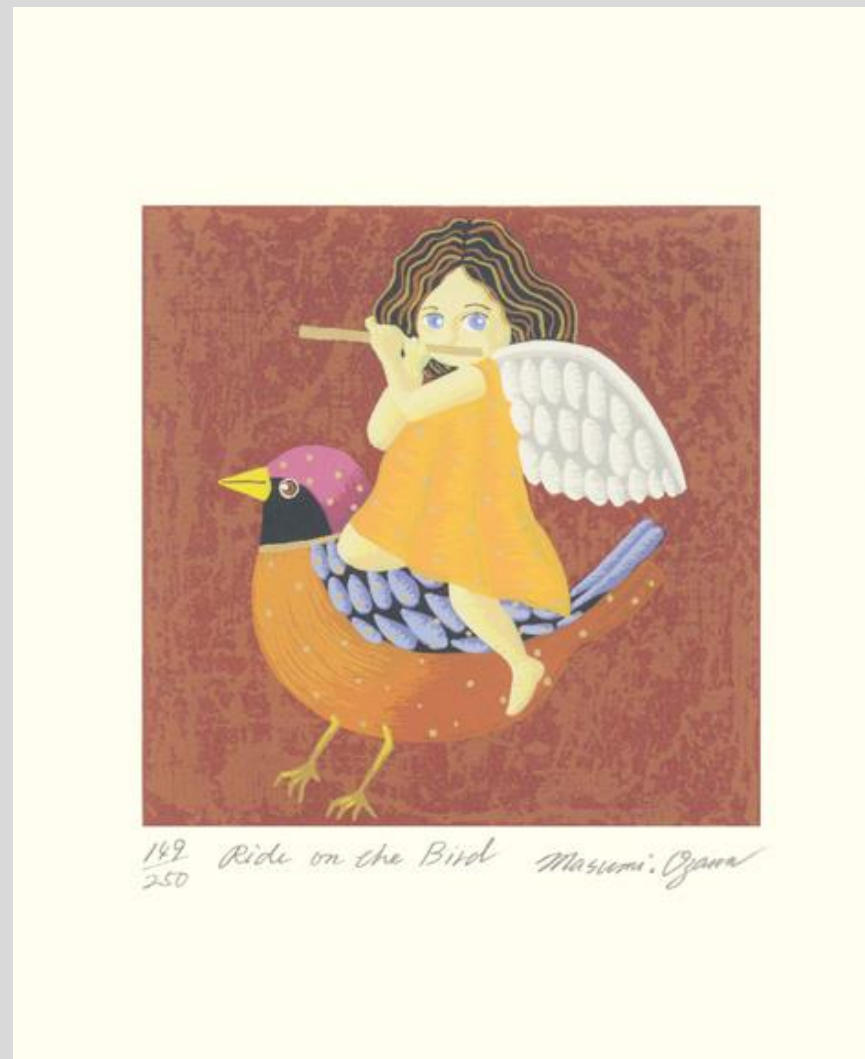


A.P. Gomi Tarō

23 Daurian redstart (*Phoenicurus aureus*) by **Akiko Yoshimura**, entitled Happy Wedding XXIV, 215 x 225 mm



24 Daurian redstart (*Phoenicurus aureus*) by Masumi Ozawa, entitled ride on the bird, 135 x 165 mm



25 Hawk (*Accipiter* sp.) by **Tetsuo Saitō**, entitled flight, 510 x 455 mm



26 Black-headed gull (*Chroicocephalus ridibundus*) by **Yutaka Takayanagi**, entitled gull flying – Fuji, 420 x 300 mm



27 Little egret (*Egretta garzetta*) by **Hisami Kunitake**,  
entitled flying, 200 x 230 mm



1973/2000 翠鳥の飛翔 Hisami Kunitake

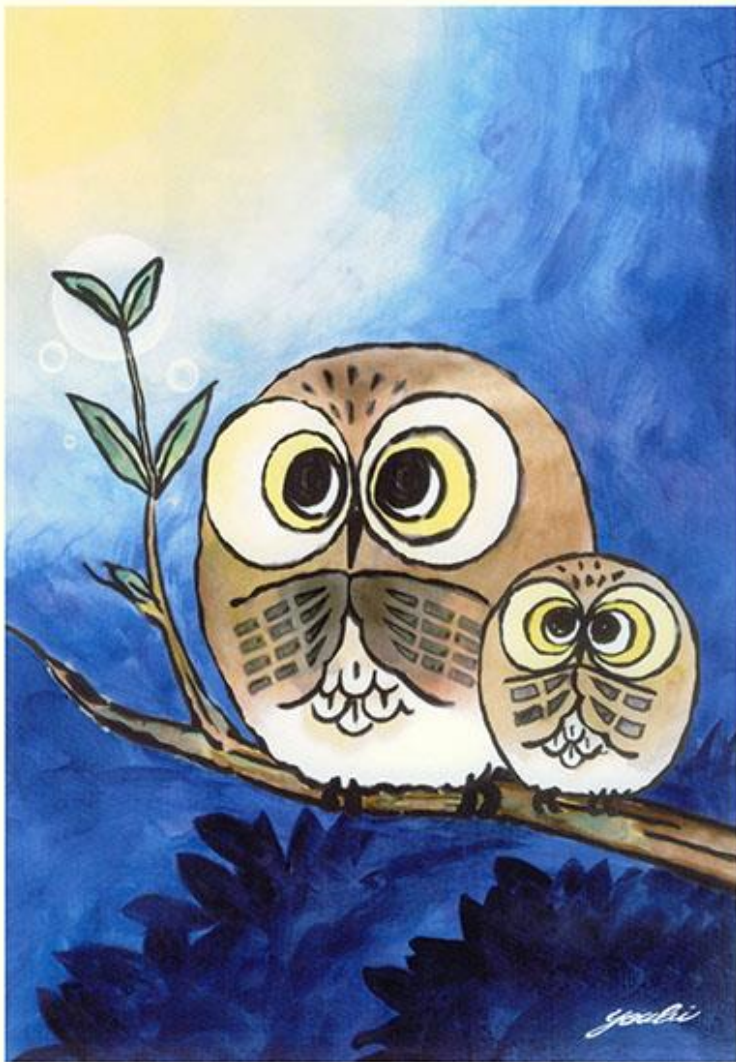
28 Domestic goose (*Anser cygnoides*) by **Kōtarō Yoshioka**,  
entitled family, 245 x 275 mm



親子 Kōtarō Yoshioka



29 Ural owl (*Strix uralensis*) by **Ayaka Sen**, entitled your health, 200 x 275 mm



30 Ural owl (*Strix uralensis*) by **Yasuyuki Kobayashi**, entitled sunset swing, 645 x 765 mm



31 Hawk (*Accipiter* sp.) by **Saburō Hattori**, 275 x 340 mm



32 Hawk (*Accipiter* sp.) by **Shigeru Sano**, entitled dance, 310 x 360 mm





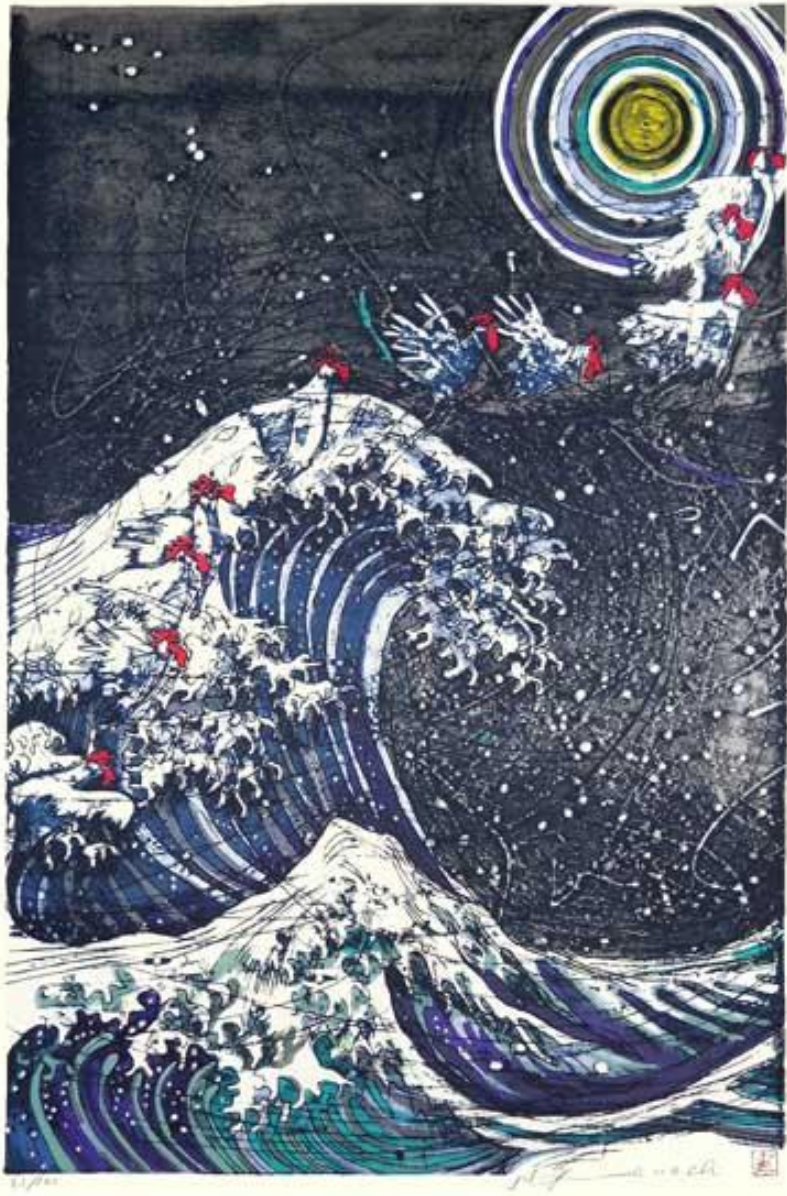
33 Crane (*Grus* sp.) by **Shin'ichi Yoshizu**,  
entitled stardust, 480 x  
365 mm



34 Swan (*Cygnus* sp.) by **Fumiko Hori**,  
entitled rose lake from  
the Nutcracker, 645 x  
375 mm



35 Domestic fowl (*Gallus gallus*) by **Seikō Kawachi**, entitled flying – Hokusai, 500 x 750 mm



36 Scops owl (*Otus* sp.) by **Masasuke Chiba**, entitled autumn, 300 x 600 mm

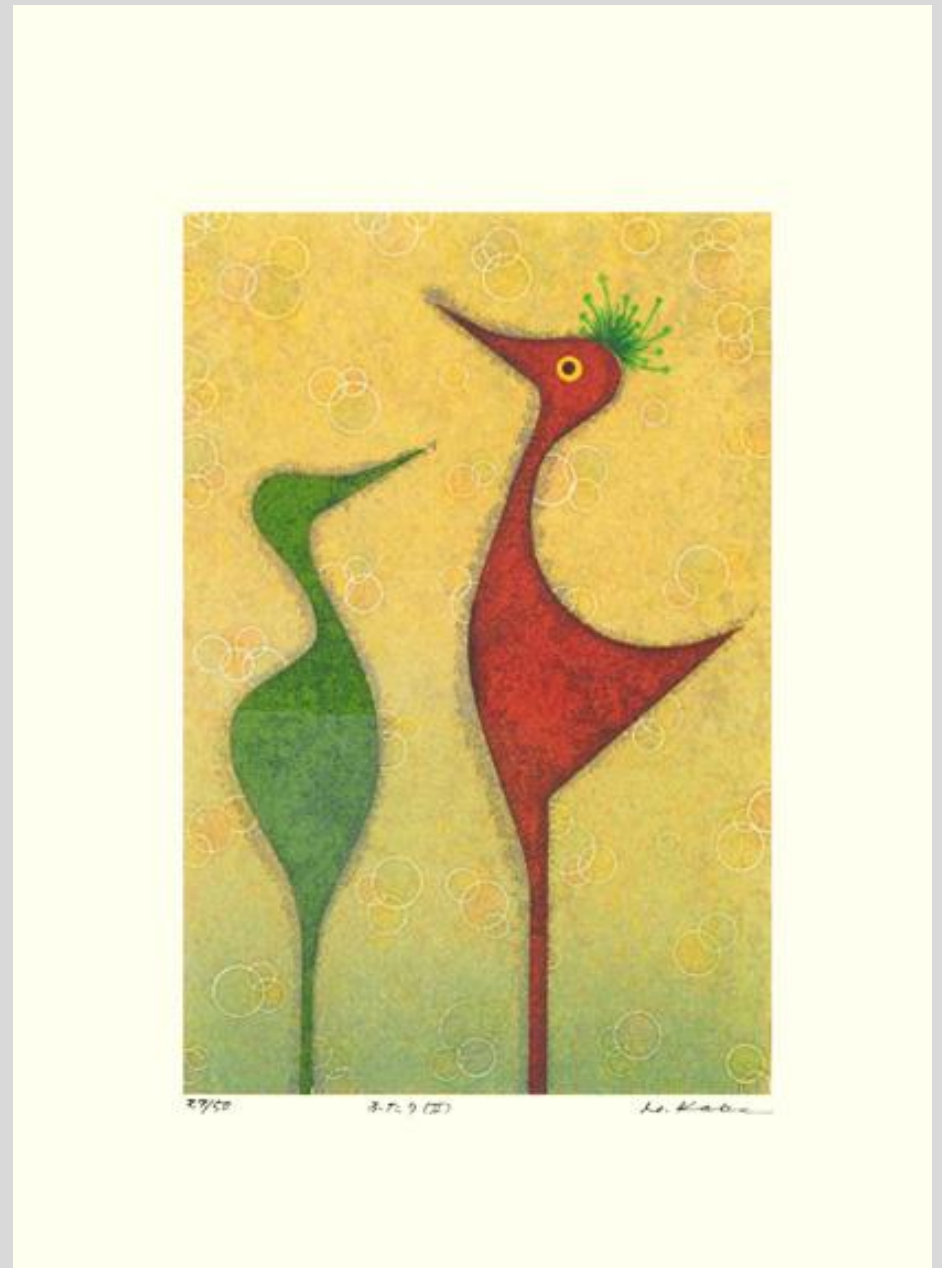




37 Domestic fowl (*Gallus gallus*) by **Nobuyoshi Koga**,  
entitled greeting of love, 140 x 200 mm



38 Domestic fowl (*Gallus gallus*) by **Hiroshi Kabe**,  
entitled two, 195 x 270 mm



39 Scops owl (*Otus* sp.) by **Keisuke Ohba**, entitled love, 105 x 150 mm



LOVE E-A Keisuke.O.

40 Collared scops-owl (*Otus lettia*) by **George Ueda**, entitled collared scops owl – older brother, 125 x 165 mm



109/200 11/27 -2012- u.george

41 Domestic fowl (*Gallus gallus*) by **Taeko Takabe**, 270 x 265 mm



42 Indian peafowl (*Pavo cristatus*) by **Asako Toyozumi**, entitled red bird, 185 x 190 mm





43 Macaw (*Ara* sp.) and unidentified birds by **Gō Yayanagi**,  
450 x 455 mm



4/35

Yayanagi 72

44 Japanese bush-warbler (*Cettia diphone*) by **Sadao Satō**,  
entitled plum crest A, 345 x 375 mm



1/20

梅紋 A

Sadao Satō 2011

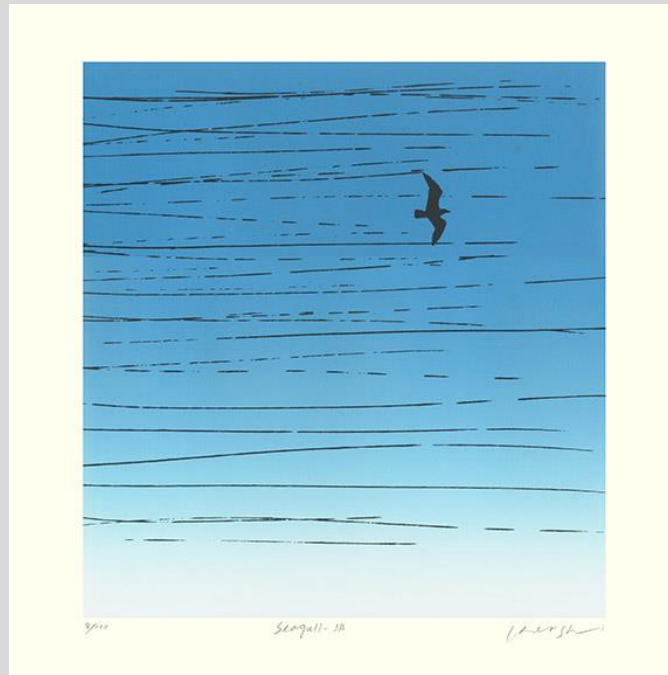
45 Gull (*Larus* sp.) by  
**Kōzō Inoue**, entitled  
gull IV, 660 x 500 mm



46 Dove (*Columba  
livia*) by **Seitarō  
Kuroda**, 400 x 300 mm



47 Gull (*Larus* sp.) by  
**Kenshi Nakamura**,  
entitled seagull – JB,  
260 x 260 mm



48 Owl (Family  
Strigidae) by **Tsutomu  
Uchiyama**, entitled  
bird, 455 x 370 mm





49 Domestic fowl (*Gallus gallus*) by **Masao Ohba**,  
entitled red bird, 105 x 150 mm



50 Unidentified bird by **Rokuichi Kaibara**, entitled flight, 635 x  
695 mm



51 Peafowl (*Pavo* sp.)  
by **Yoshiko Sawa**, 290  
x 210 mm



52 Unidentified bird  
by **Ay-Ō Iijima**, entitled  
sings – A, 170 x 120  
mm



53 Red-flanked bluetail  
(*Tarsiger cyanurus*) by  
**Yukio Koga**, entitled  
oleander, 370 x 290 mm

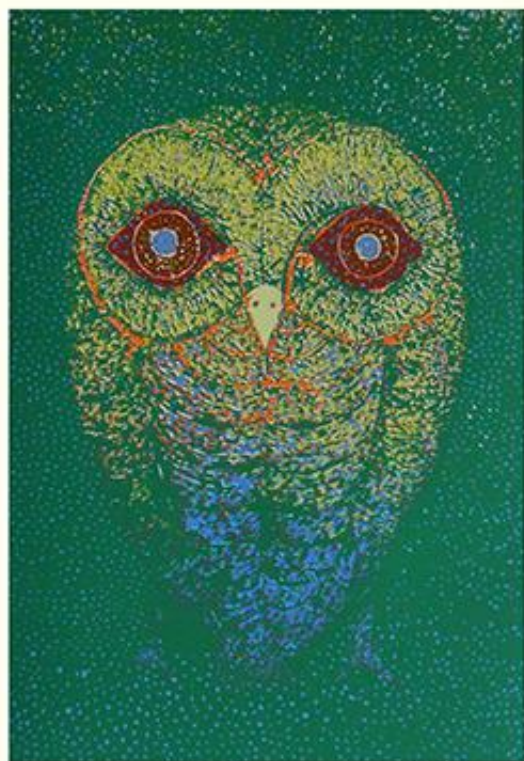


54 Unidentified bird by  
**Mari Aoe**, entitled  
golden sky – on the bird of  
dreams, 325 x 255 mm





55 Ural owl (*Strix uralensis*) by **Shizuo Hariu**, entitled owl, 505 x 645 mm



76 8 20 Shizuo Hariu

56 Mythical hō-ō bird by **Kazuo Yoshizawa**, entitled immortal bird, 360 x 535 mm



7/20

Kazuo Yoshizawa



57 Unidentified bird by **Yasoji Wakayama**, entitled machine and bird, 300 x 275 mm

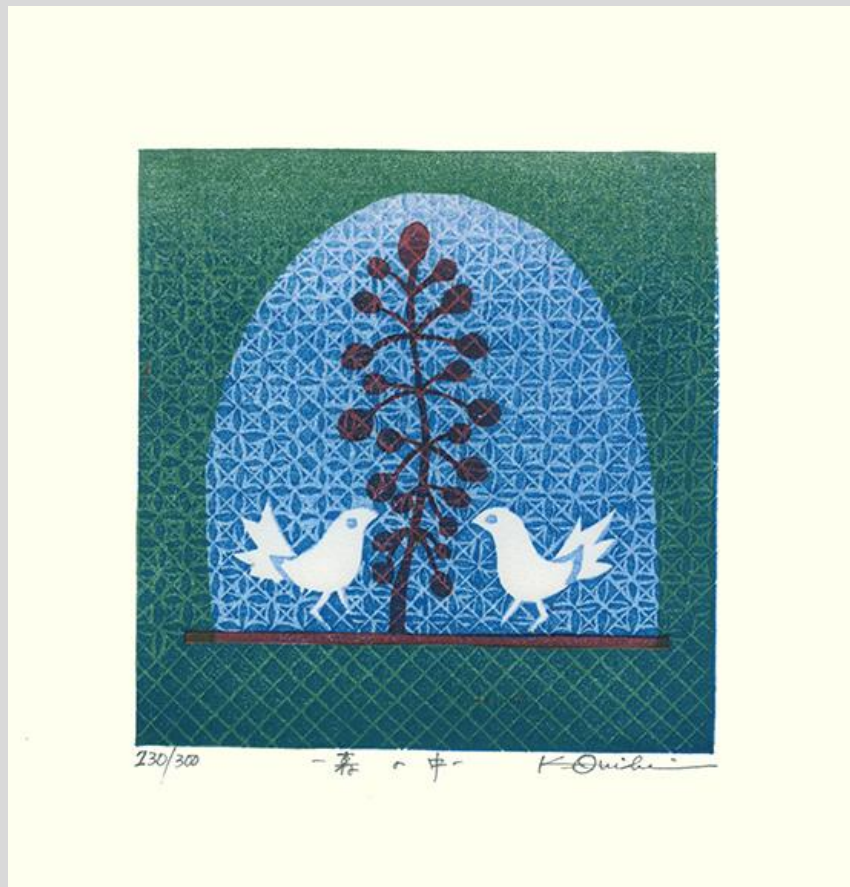


58 Unidentified bird by **Hiroshi Kubota**, 260 x 270 mm





59 Unidentified bird by **K. Ouichi**, entitled in the forest, 180 x 185 mm

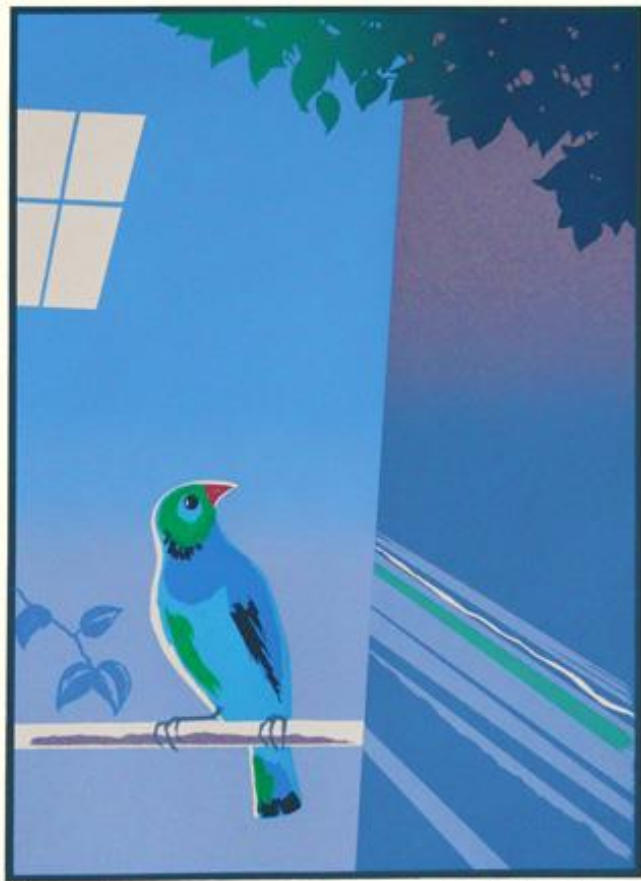


60 Unidentified bird by **Masao Kohmura**, entitled bird to human space figure, 600 x 600 mm

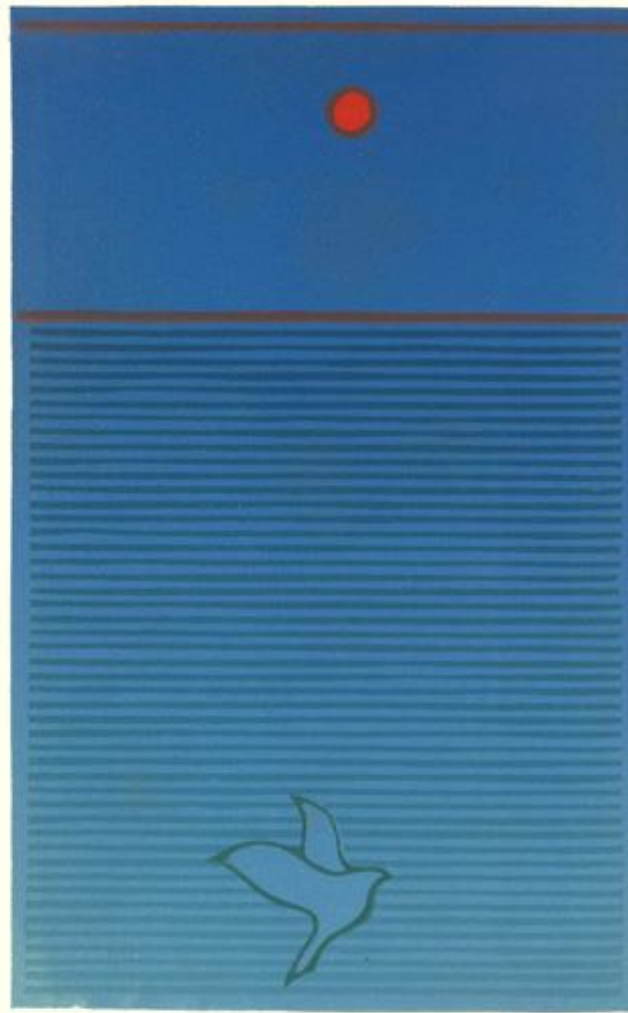




61 Unidentified bird by **Kunio Imamura**, entitled morning bird, 350 x 450 mm



62 Unidentified bird by **Kunihide Matsumoto**, entitled bird, 210 x 245 mm

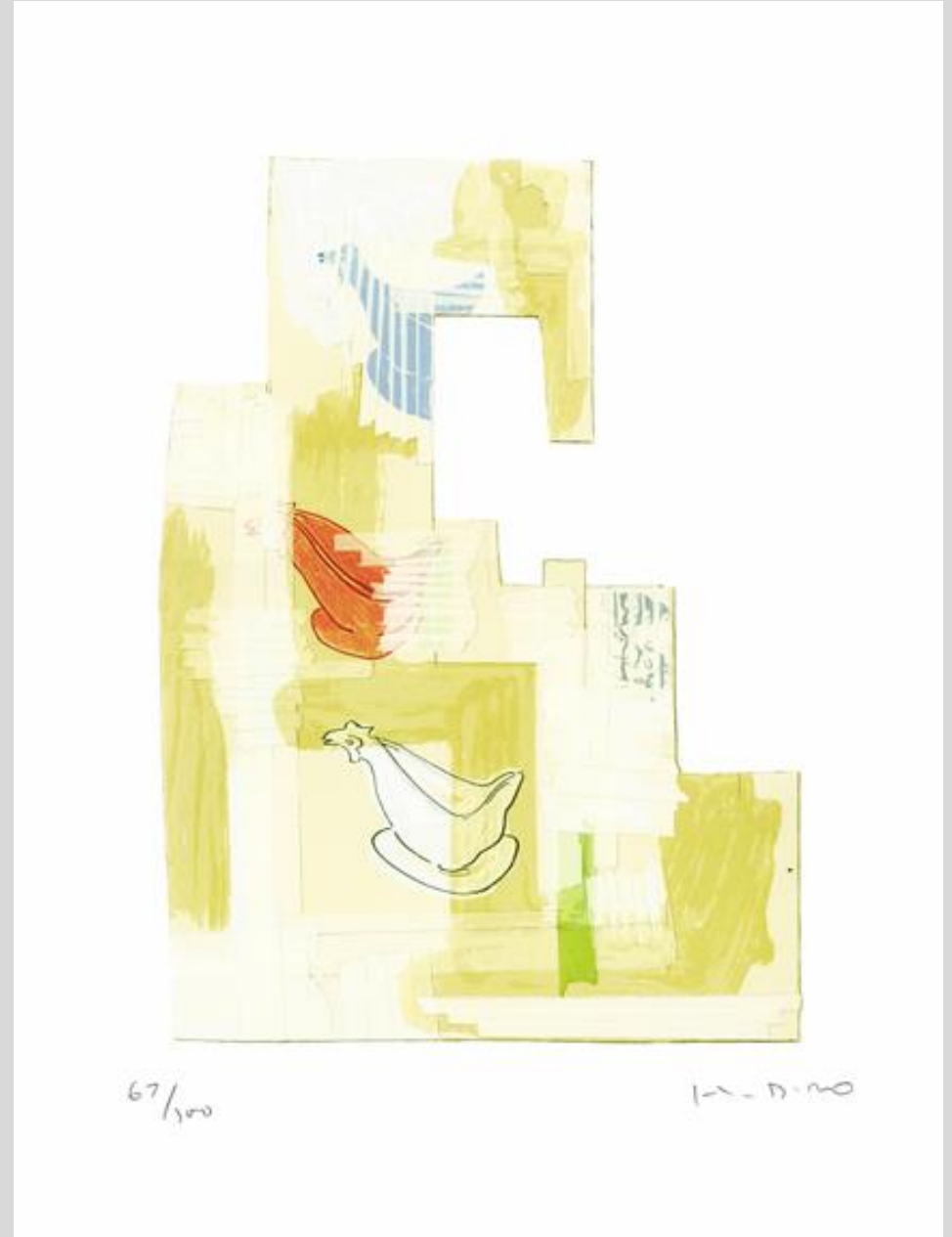


鳥 73.11 くにひで

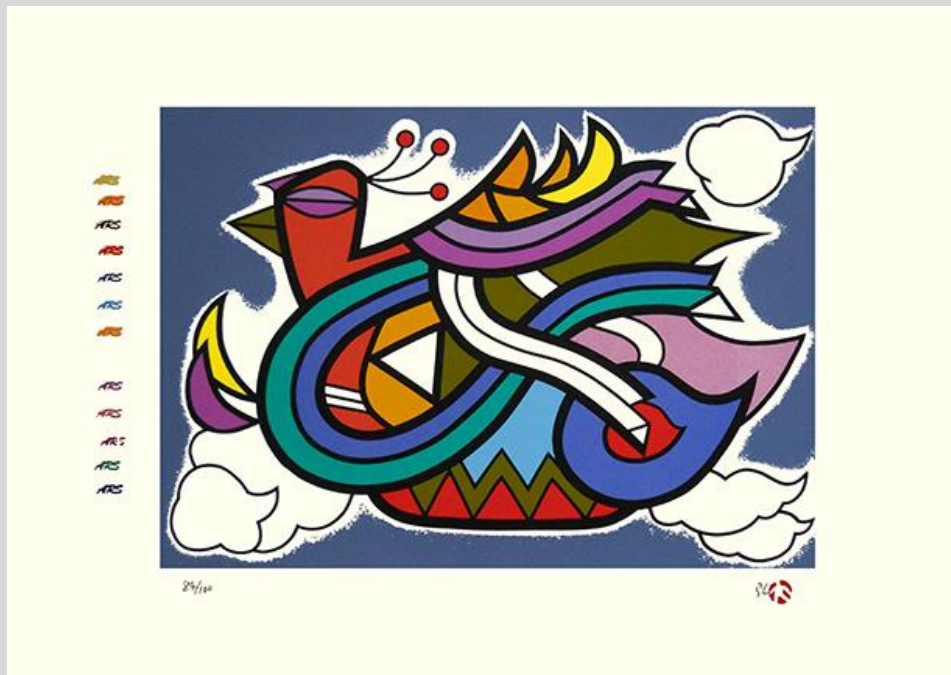
63 Unidentified bird by **Naoko Tanikawa**, entitled umbrella, 260 x 365 mm



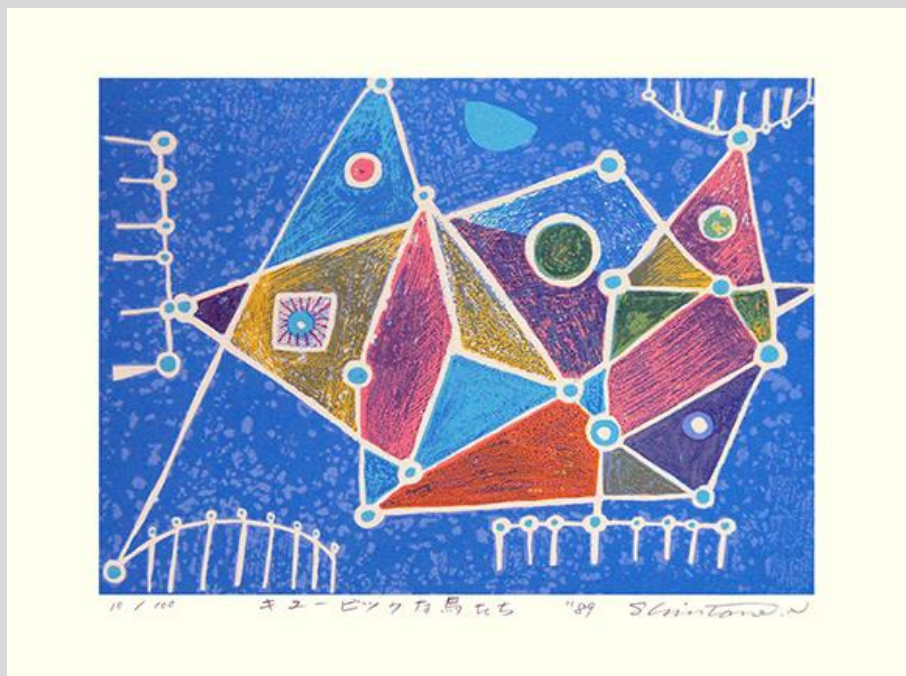
64 Domestic fowl (*Gallus gallus*) by **Katsuhiko Hibino**, 380 x 505 mm



65 Unidentified bird by  
**Hiroyuki Ohnishi**, 490 x 355  
mm



66 Unidentified bird by **N. Shintane**, entitled cubic bird,  
380 x 285 mm





67 Unidentified bird by **Tetsurō Kimura**, entitled bird tree, 650 x 790 mm



68 Unidentified bird by **Fusako Yose**, entitled music of Andean civilization 4, 280 x 380 mm

